

# C.A.T. SLP

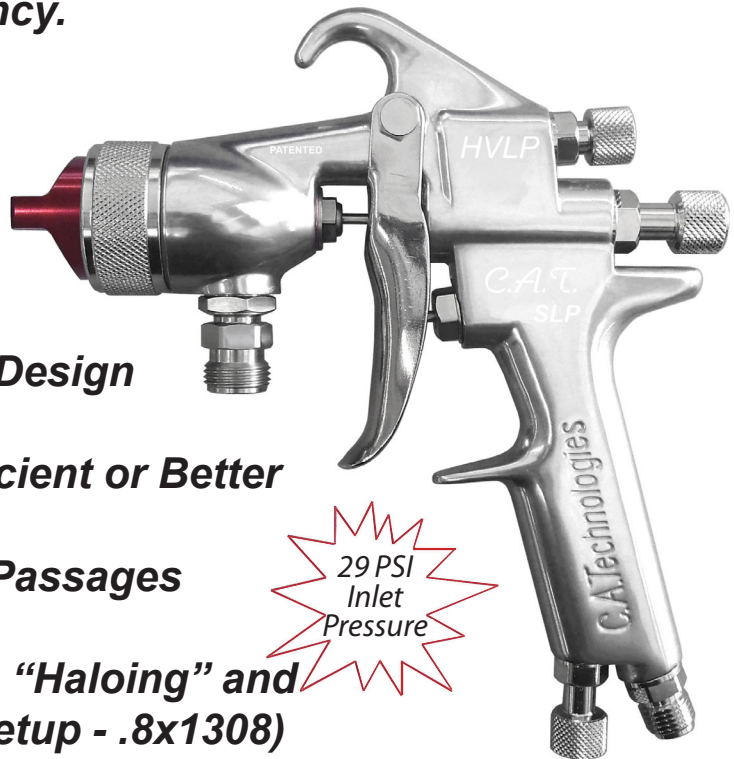
## Stainless Low Pressure

The CAT SLP has been designed for NGR release, toner stain and consistent color matching applications. The 12 point air diffusion design significantly improves pattern coverage uniformity, process capability and color consistency.

## C.A.T. SLP

### Features

- 29 PSI Inlet Pressure
- Patented 2 Piece Nozzle Design
- HVLP - 65% Transfer Efficient or Better
- All Stainless Steel Fluid Passages
- Low Pressure Eliminates "Haloing" and "Motting" (Spray Stain Setup - .8x1308)
- Best Top Coat Spray Gun in the Market! (Top Coat Setup 1.3x1313)



29 PSI  
Inlet  
Pressure

## C.A.T. SLP

*"It's HVLP at its Finest"*

### Available Outfits

#### 2 Quart Outfits

(Includes 5' Hose Assemblies)

#### Tank Outfits

Tank Outfits Include 25' Hose Assemblies and are available in 2.5 gal, 5 gal, 10 gal, 12.5 gal and 15 gal sizes.

(Includes 25' Hose Assemblies)



2 Quart

(Economy)

**OCSLP-130**



2 Quart

(Bandit)

**OCSLP-600**

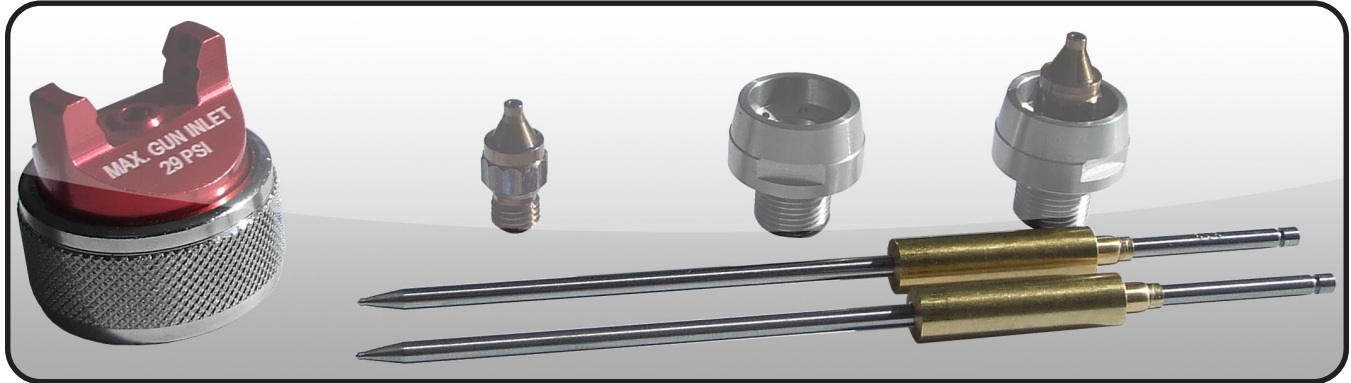
### CAT Packs



**CP-CSLP-303R2**



**CP-CSLP-PPSR2**

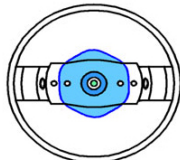
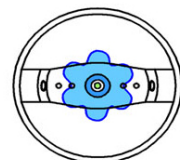






## C.A.T. SLP Nozzle Chart

Material	Orifice Size	CSLP HVLP
Stains, Dyes	0.8	29 PSI @ 13.5 CFM
Single Stage	1.3 - 1.4	29 PSI @ 13.5 CFM
Base Coat	1.3 - 1.4	29 PSI @ 13.5 CFM
Clear Coat	1.3 - 1.4	29 PSI @ 13.5 CFM
High Solid Clears	1.4 - 1.5	29 PSI @ 13.5 CFM
Sealer	1.4 - 1.7	29 PSI @ 13.5 CFM
Primer, Wash Primer, Epoxy	1.4 - 1.7	29 PSI @ 13.5 CFM

**Q: What makes our atomization superior?**

**A: Our 12 Point Balanced Plenum**

C.A.T. SLP	Competition
 <p>12 point diffusion makes a more even cone of air as the fluid is atomized</p>	 <p>Without 12 point diffusion, high and low spikes exist as the air atomizes the fluid</p>
 <p>The result is more uniform particles</p>	 <p>The result is very small and large particles</p>
 <p>A flatter more uniform finish is achieved</p>	 <p>This will have a more orange peel finish</p>

## Nozzle Kits for C.A.T. SLP

HVLP Kit	Orifice Size	Air Cap (Included)	Orifice (Tip) (Included)	Needle (Included)
JK1308	0.8 mm	23-1308	33-0208 0.8mm (.022")	40-1308 (308)
JK1310	1.0 mm	23-1310	33-0210 1.0mm (.040")	40-1310 (310)
JK1312	1.2 mm	23-1312	33-0212 1.2mm (.046")	40-1312 (312)
JK1313	1.3 mm	23-1313	33-0213 1.3mm (.052")	40-1313 (313)
JK1314	1.4 mm	23-1314	33-0214 1.4mm (.055")	40-1314 (314)
JK1315	1.5 mm	23-1315	33-0215 1.5mm (.059")	40-1315 (315)
JK1317	1.7 mm	23-1317	33-0217 1.7mm (.070")	40-1317 (317)
JK1319	1.9 mm	23-1319	33-0219 1.9mm (.075")	40-1319 (319)
JK1322	2.2 mm	23-1322	33-0222 2.2mm (.086")	40-1322 (322)